


<p>“Home Safely, Every Day”</p>		Safe Operating Procedure
		Ring Feeder
		<p>Version 1 // SOP Department: FL-001 WHS/Compliance Issued on: 02.05.2026 Next Review: 02.05.2027 Approved by: Alan Guest Position: Compliance Manager</p>

Ring Feeder Procedure

Background	The purpose of the ring feeder SOP is to provide guidance on how to safely use the ring feeder.
-------------------	---

Personal Protective Equipment (PPE)		<ul style="list-style-type: none"> ✓ Steel capped safety boots comply with AS/NZS 2210. ✓ Protective gloves must comply with AS2161 Occupational protective gloves. ✓ High visibility clothing will include garments such as vests, shirts and jackets etc. that comply with AS/NZS 4602:1999.
--	---	---

Ring Feeder Inspection

<p>Always</p>	<ul style="list-style-type: none"> ✓ Check the coupling equipment to ensure there is no damage ✓ If the safety checks show that any of the wear limits have been exceeded, or that the functionality of the coupling has been impaired; servicing must be carried out immediately. ✓ If the coupling equipment does not operate as described in the Driver’s Manual, contact the workshop to report the issue and complete a DVR. ✓ If the coupling will not enter the locked position after repeated attempts, stop what you are doing and immediately contact the workshop or Supervisor/Allocator for trouble shooting and corrective measures. ✓ Jack-knifing is seen as a very serious collision between a vehicle and trailer. If jack-knifing occurs, equipment such as the coupling, drawbar, endplates, draw beam, etc., must be dismantled by the workshop and carefully examined, and replaced if damage is suspected.
	

“Home Safely, Every Day”



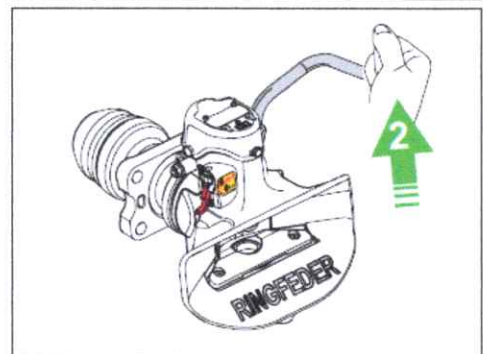
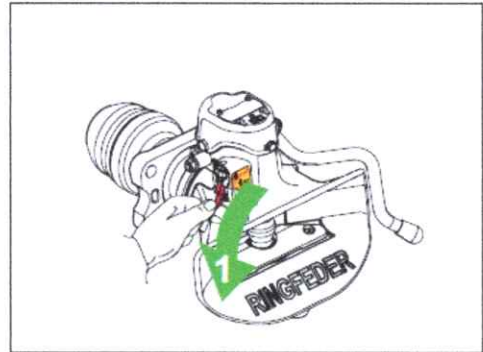
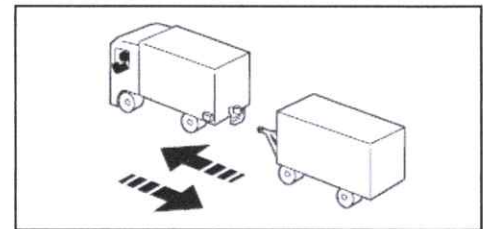
Safe Operating Procedure

Ring Feeder

Version 1 // SOP
Department: FL-001 WHS/Compliance
Issued on: 02.05.2026
Next Review: 02.05.2027
Approved by: Alan Guest
Position: Compliance Manager

Ring Feeder Procedure


- 1) The truck reverses into the ring feeder located on either the prime mover or rear of the A- trailer.
- 2) The truck driver will use three points of contact to climb out of the truck and confirm that the ring feeder has locked onto the eye of the drawbar.
- 3) Once the visual inspection is completed which uses this toggle tab rather than the turn handle to release the hitch handle. Drivers need to pull the red tab down to the "STOP" position and then lift the handle up to release the ring feeder.
- 4) Once the ring feeder is locked and secure ensure that you perform a tug test in line with the ACFS hitch and unhitch procedure.
- 5) Connect the air and electrical leads.

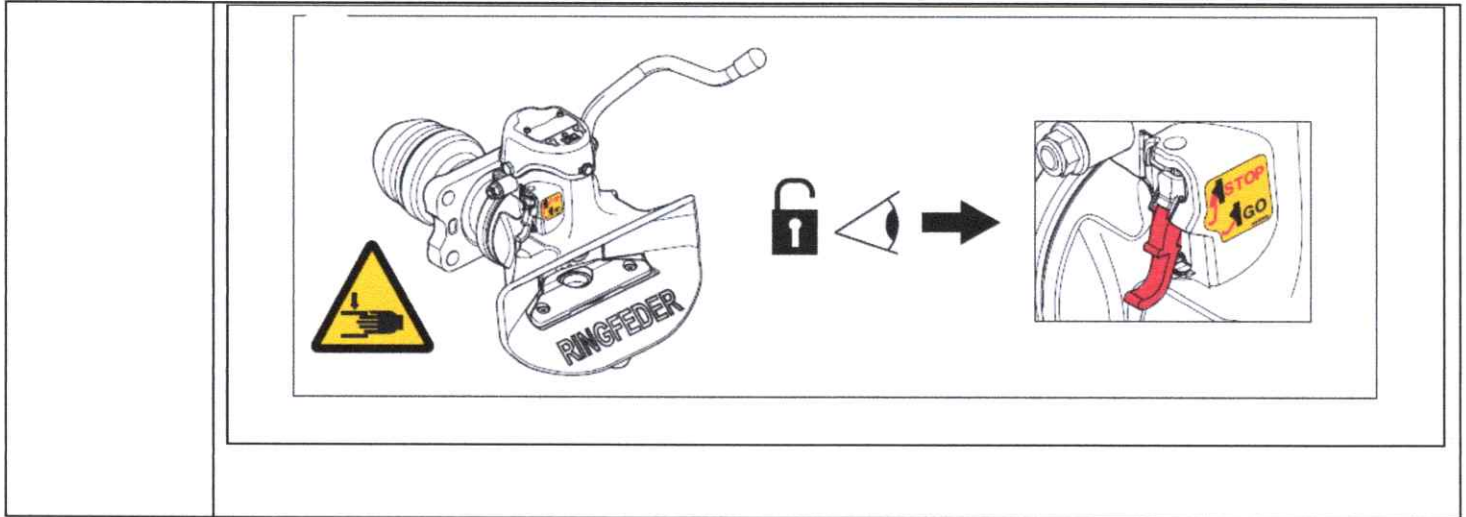


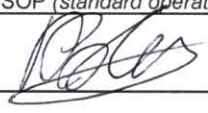
Always

Important:

- 6) Ensure that the driver checks the red switch is in the Go position as shown in the below picture before proceeding.

<p>“Home Safely, Every Day”</p>		<p>Safe Operating Procedure</p>
		<p>Ring Feeder</p>
		<p>Version 1 // SOP Department: FL-001 WHS/Compliance Issued on: 02.05.2026 Next Review: 02.05.2027 Approved by: Alan Guest Position: Compliance Manager</p>



SOP Sign Off	
This is to confirm that I have fully read and understand all the content contained in the above SOP (standard operating procedure)	
Person Performing the Training:	Hayden Foley 
Employee Name:	
Employee Sign:	
Training Date:	